

New Luxor Theatre

Kop van Zuid, Rotterdam NL
 1996–2001
 shortlisted for Mies van der Rohe Award 2001
www.bolles-wilson.de/lux

Competition	1996, First Prize
Completion	2001
Gross floor area	24 000 sqm
Volume	160 000 cbm
Building costs	35 Mio. EUR
With	Bureau Bouwkunde (local support office)
Client	Luxor Theatre City of Rotterdam

The New Luxor Theatre faces both the Maas River and Rijn Harbour – A multiple orientation, a single wrapping façade, a 360° building. An internalised ramp allows three 18 m long trucks to park directly besides the first floor stage. The ramp roof provides an architectural promenade in the foyer. The Luxor auditorium seats 1500, a giant scaled musical instrument, a surprisingly ,intimate room'. The Luxor facilitates with an appropriated spatial theatricality the well working of complex theatre logistics.

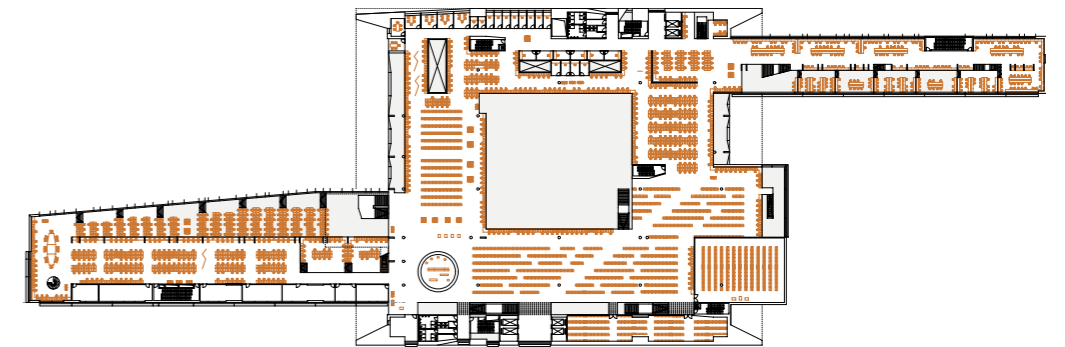
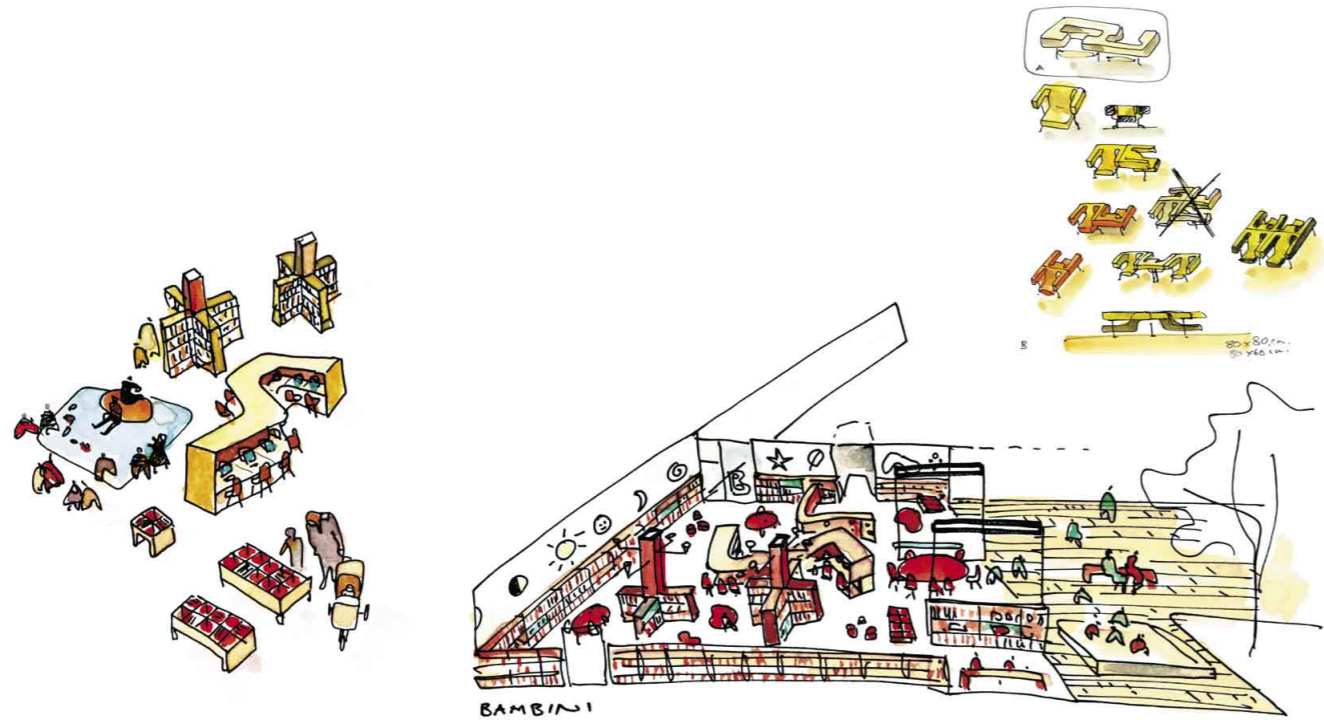
City Library Münster

Münster Historic City Center D
 Mies van der Rohe Award 1995, Nomination
 German Architecture Award 1995, Commendation
www.bolles-wilson.de/CityLibrary

Competition	1987, First Prize
Completion	1993
Gross floor area	9 750 m ²
Building Cost	€ 26.6 Mio.
Capacity	250 000 books, 20 000 audio-visual media, 400 periodicals 2 700 users / day 1.5 Mio. loans / year
Collaboration with:	Harms & Partner (in realization phase)
Client	Stadt Münster

The Münster Library was Bolles+Wilson's first major public commission. After more than ten years it remains near the top of Germany's ,library-user-ranking-list'. A verification not only of functionality but also of the attention to detail, to spatial multiplicity and to the ambience and atmosphere within.

A transparent entrance zone (café, newspaper salon) leads via an information supermarket to the main information desk on the connecting bridge. This in turn is adjacent to book stacks in the ship-like outer volume. The atmosphere is quiet, studious. Books line the outer curved wall, a dramatic stair leads down through a 22 m void to the basement media library, which connects in turn to the courtyard facing children's library and back up to the entrance zone. Up to four thousand users enter the Münster Library on one day.



BEIC - European Library for Information and Culture

Milan, Italy
 2003 – 2011
www.bolles-wilson.de/BEIC

International Competition	2001, First Prize
Planning and realization	2004 – 2011
Gross floor area	83 000 sqm
Volume	479 000 cbm
building costs	140 Mio. EUR
books	900 000
audio-visual documents	50 000

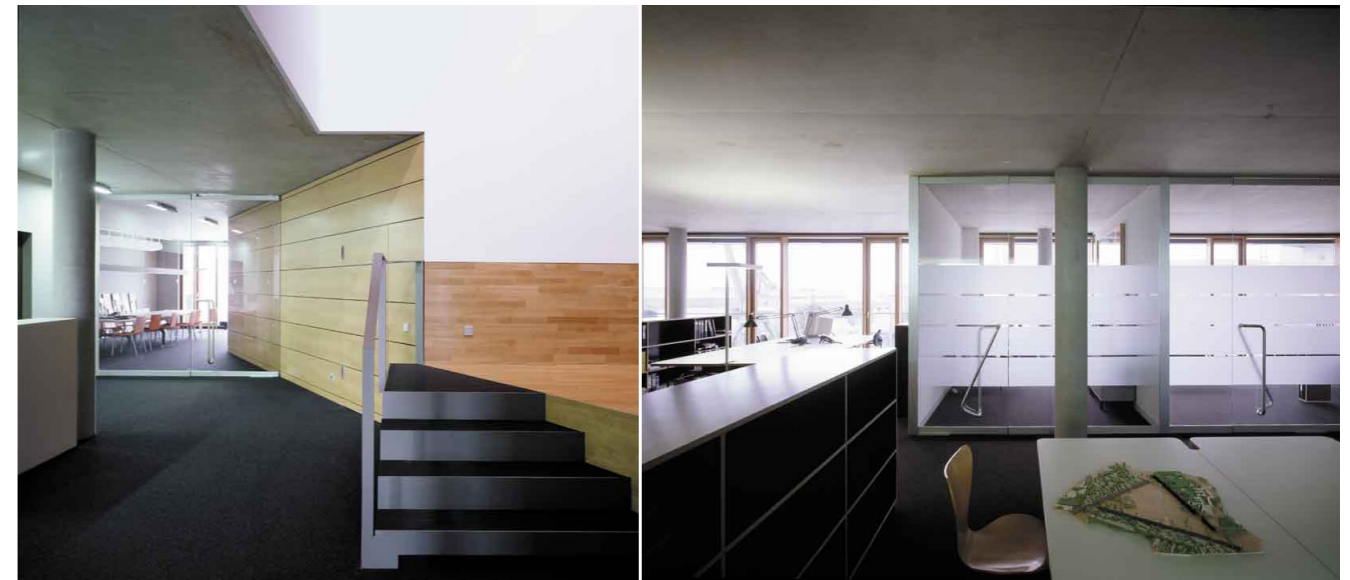
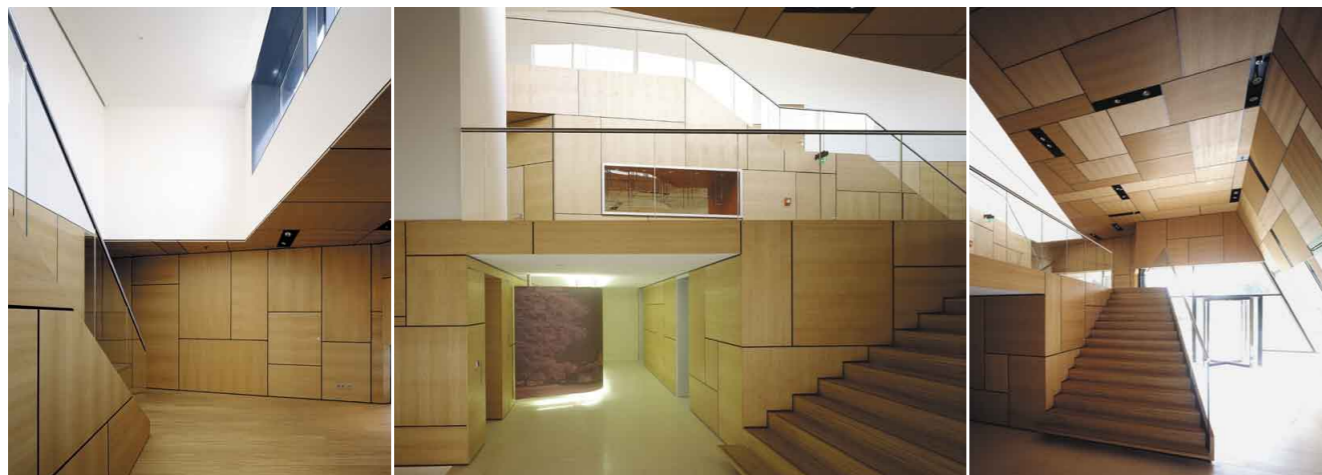
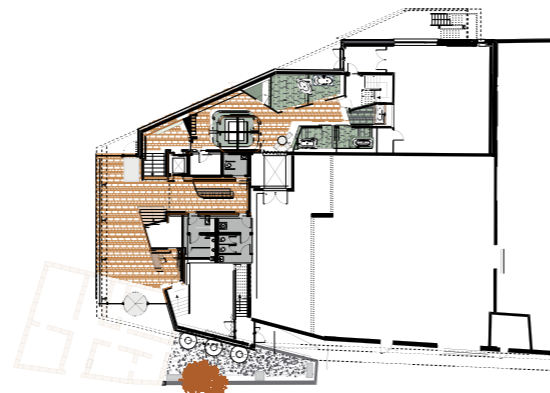
Consortium BEIC
 BOLLES+WILSON, Münster
 ahw Ingenieure, Münster
 alterstudiopartners, Milan

The BEIC is more than just a large city library or media centre, its catchment area includes the whole of Lombardy. It contains library, media centre, conference centre, workshop and shopping facilities, restaurants and a centre for rare books. This winning entry was complimented by the jury (which included Giancarlo de Carlo and Rafael Moneo) for its sophisticated integration of such a large and complex program into a coherent and focussed spatial sequence. By focussing functions around a central forum a simultaneous legibility, grandeur and intimacy is achieved.

BOLLES+WILSON are the architects for this project, also the general planners. Delivering under a single contract a full and integrated design, structural, M+E and cost (architects in Germany also perform Q. S. functions), documentation. This complete package has been submitted for general contractor tendering in 2009.

the role of the architect is to translate, to facilitate, to give form, character

BOLLES+WILSON



Kaldewei Kompetenz Center

Ahlen D
2003 – 2005
www.bolles-wilson.de/KaldeweiKC

Invited Competition	August 2003, First Prize
Construction	April 2004 – March 2005
Gross floor area KKC	1 460 sqm
Storage and melting plant	920 sqm
Volume	11 300 cbm
Building costs	3.6 Mio. EUR
Client	Franz Kaldewei GmbH & Co. KG, Ahlen

A showroom, a Customer and Information Centre adjacent to the enamel plant of the worlds leading bath producers. An intervention on urban, medial and interior landscape scales. A continuous skin of coloured enamel strips (bath material) encompass the KKC and also the original and still functioning enamel smelting plant. This synthesis of function and representation into a single urban-scale-building-block gives a new coherence to the disparate Ahlen context. The KKC has a signal function, a global media event to which Kaldewei customers gravitate. They find an interior world, an encyclopaedia of sensuous atmospheres where „whirl baths“ can be tested, new products viewed, information exchanged on the balcony café, a meeting or conference held, and as conclusion a view into the production plant and its ovens of molten enamel. Choreographed light and the materiality of enclosing warm wood walls, ceilings and floors, or white stone and a variety of mosaics in the whirl cabins orchestrate a rich and surprisingly varied sequence of atmospheres.

2 Harbour Buildings

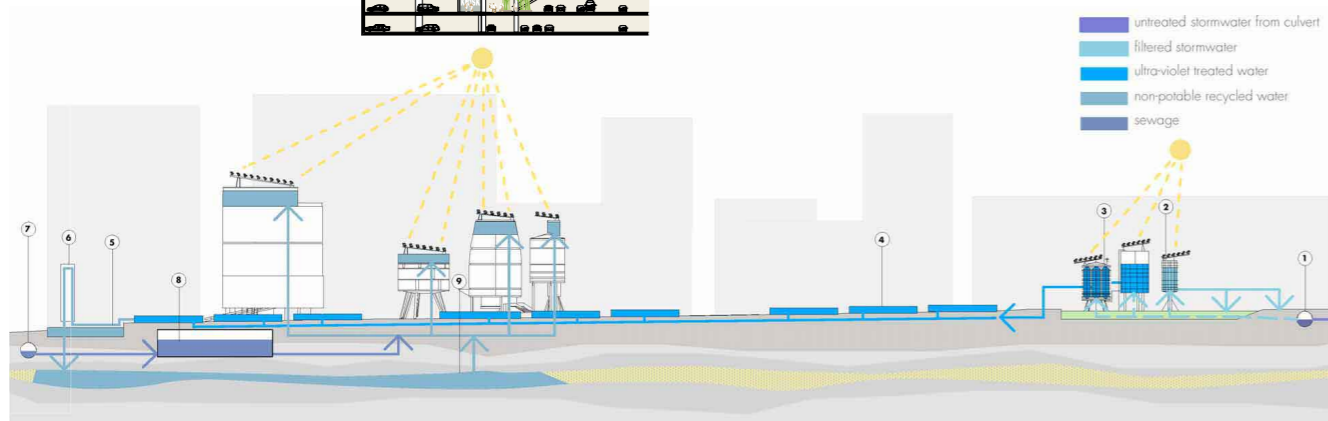
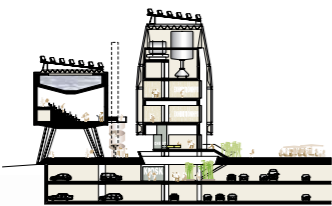
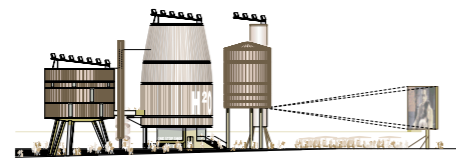
Münster D
2003 – 2005
www.bolles-wilson.de/HarbourOffices

Direct commission	2003
Completion	2005
Gross floor area	9 800 sqm
Building costs	9.1 Mio. EUR
Client	LVM Versicherungen Prof. Julia B. Bolles-Wilson, Peter L. Wilson

Like its big brothers in Rotterdam, Hamburg, London or Genoa, Münsters canal harbour (released from servitude) is in the process of becoming – a new urban quartier.

No. 14 and No. 16 like their warehouse predecessors are ambivalent as to exactly what goods or activities they host. Deep (22m) loft plans facilitate a multitude of layouts. Façades on the other hand are specific, material and character giving.

The strategy of a loft building is closely related to that of art school studios – an openness, flexibility and robustness is required – but not to the detriment of character. Spaces are generous, balconies nearby (for a quick change of seen).



Recent designs in Australia

Green Square Town Centre

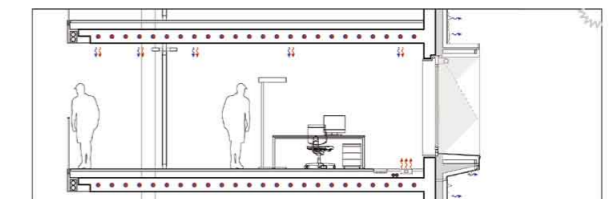
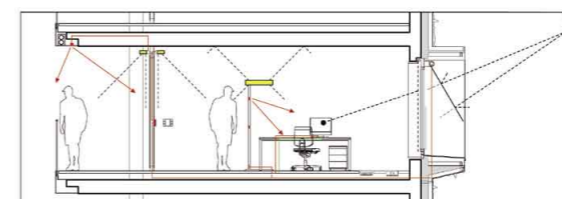
Green Square Town Center Public Domain, Sydney AUS

Competition 2001
Center for 5 500 residents
7 000 workers

Cooperation between macgregor+partners, Sydney
BOLLES+WILSON, Muenster

Client City of Sydney Council

The project proposes public and private uses including three urban squares, a new park, community facilities, library, cinemas, bars, residential, commercial and retail facilities. These are arranged along a restored urban creek and green spine. The project is driven by an ecological engine that delivers recycled storm water & renewable energy to the project.



Recent LEED- based design

Sedus Headquarters

Waldshut, Germany

Invited Competition 2008
Gross floor area 8 100 sqm
Energetic concept Ingenieurbüro Nordhorn
Service Engineers, Münster

Client Sedus Stoll AG, Waldshut

The facade and roof greening affects the building's microclimate positively, as the solar heat gain is substantially limited.

The facade greening results in cooling through evaporation, which further reduces the energy required to cool the building. The building is planned to meet low-energy building standards. A wood-pellet or a woodchip heating system guarantees a CO₂-neutral heating.

A water pipe system uses the mass of the floor decks for the heating and cooling of the building.

The operation of this system is purely driven by a 250 sqm solar heating array, which captures solar energy through direct thermal absorption.

Capability and Process

BOLLES+WILSON's track record of more than 30 buildings all completed on time, within budget and with a degree of architectural quality and invention that has earned their international reputation and two monograph issues of the internationally leading Spanish journal EL CROQUIS will, we hope, qualify us for consideration for the new building for the Faculty of Architecture and Planning of the University of Melbourne.

The philosophy of our architecture is somewhat Husserlian, phenomenological, atmospheric. We do not have a 'ready made vision'. Each project follows its own trajectory, a unique interpretation of specific uses, latent site potentials and organisational politics. The role of the architect is to translate, to facilitate, to give form and character, to make a unity from manifold starting points. Our aim is a 'poetic enhancement of necessity'. To make unique places, which do not overwhelm, but giving dignity to their functions. Our City Library in Muenster does this daily for 3 000 uplifted visitors, our Luxor Theatre in Rotterdam nightly for 1 500 musical lovers, and the planned BEIC Library offers a wide range of facilities (particularly media and student facilities) not only for the metropolis of Milan but for the whole of Northern Italy.

BOLLES+WILSON was founded in London and is now based in Germany. Our base staff of 25 administers all phases of German projects. In collaboration with local partner offices we have also designed and administered projects in Japan, Australia, Holland, Italy, the UK, Denmark, Albania and Lebanon. If successful in Melbourne we would set up a project specific team collaborating with a Melbourne based partner office, to communicate directly with client bodies and Australia based consultants.

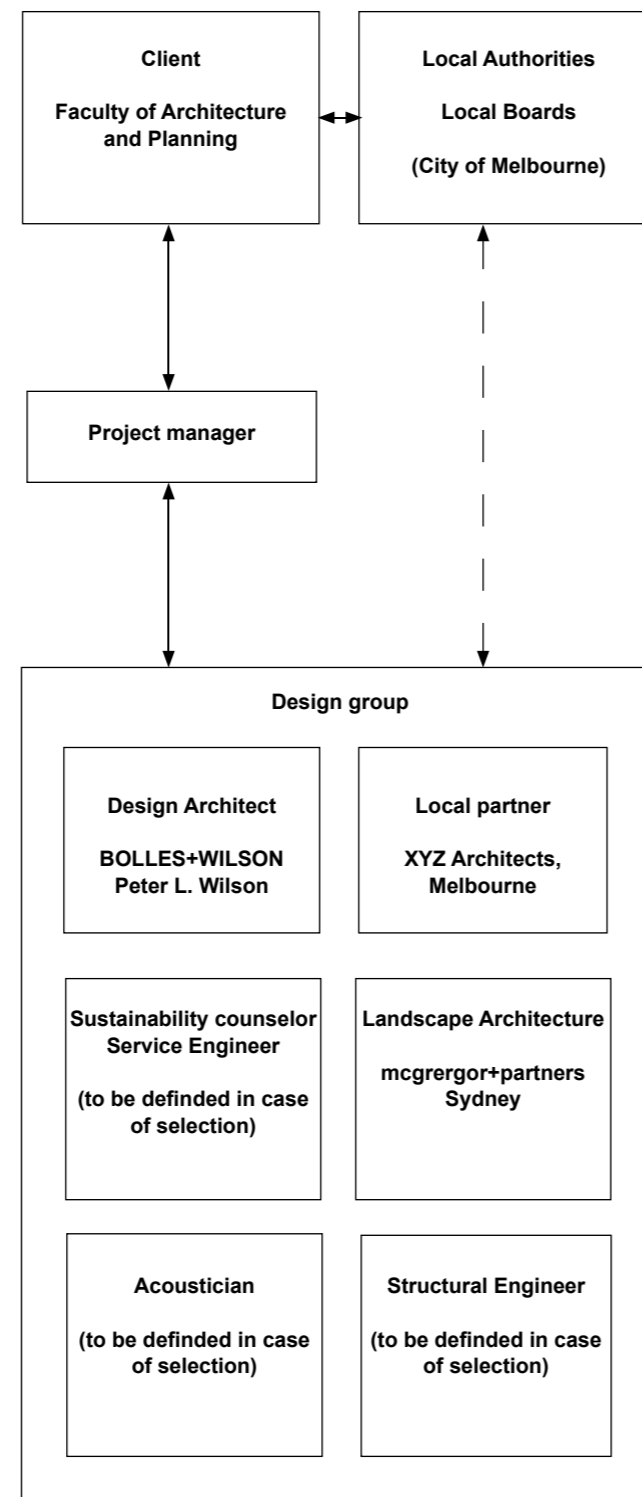
Our urban planning experience includes a masterplan for the wholesale market in Copenhagen – International Competition First Prize 2008, the new Eemcentrum Cultural Quartier in Amersfoort (Netherlands), the Falkenried Quartier in Hamburg (winner of the German 2004 Urban Planning Award) and the new urban quarter of Monteluca in Perugia (Italy). On specific building projects BOLLES+WILSON have considerable experience with workshops and other co-operative design and planning procedures. This experience is particularly useful for cultural and educational programs, interpreting heterogeneous needs into a project of rich artistic merit. Our expertise is in honing individual, expressive (but not overtly iconic) projects – informed by specific local ambiances, politics and cultural nuances and resulting in creative, well working, sustainable architecture.

Within BOLLES+WILSON the recognizable and individual character of our product is achieved by the intense involvement of one or both partners in every project.

Julia Bolles-Wilson is also Professor for Design and CAD and Dean of the Architecture Faculty of the University of Applied Sciences in Muenster. Peter Wilson was for 10 years Unit Master at the AA in London and subsequently Guest Professor at the Weissensee Kunsthochschule in Berlin and at the Accademia di Architettura in Mendrisio (CH). The partners themselves lead each project and are continuously and intimately involved at each design and realisation phase.

The first BOLLES+WILSON building was an art collector's house in London, the largest German project a 60 million Euro reframing of the Cathedral Square in Magdeburg, BEIC – an 80,000 sqm Mediothek for the City of Milan is currently underway, the smallest project is the Suzuki House in Tokyo (for the author of 'Do Android Crows Fly Over The Electronic Skies of Tokyo'). We would very much appreciate the opportunity to extend this list by competing for the creation of the new Faculty of Architecture and Planning of the University of Melbourne.

Project organisation chart



Recent client reference

**BEIC – Biblioteca di Informazione e Cultura
Milan, Italy, project in progress,**
<http://www.bolles-wilson.de/BEIC>

Client: Fondazione BEIC
Via Dogana, 4
20123 Milano

Contact: Prof. Antonio Padoa Schioppa

**Kaldewei Kompetenz Centre
Ahlen, Germany, project completed**
<http://www.bolles-wilson.de/kaldewei>

Client: Franz Kaldewei GmbH & Co. KG
Beckumer Str. 33–35
59227 Ahlen
Germany

Contact: Mr. Lepper
Tel. +49.2382.785310

**Hafenweg 16 - offices, commercial
Muenster, Germany, project completed**
<http://www.bolles-wilson.de/hafenweg>

Client: Peter L. Wilson, Julia B. Bolles-Wilson
Hafenweg 16
48155 Muenster
Germany

and LVM Versicherungen

Contact: Peter L. Wilson
Tel. +49.251.48272-0

**adidas sport center
Herzogenaurach, Germany, project in progress,**
www.bolles-wilson.de/AdidasSportsCentre

Client: adidas ag
Adi-Dassler-Strasse 1
D-91074 Herzogenaurach

**Fine Food Hall, Am Alten Hafenam, Germany
(Conversion of harbour offices, commercial, housing)
project in progress,**
<http://www.bolles-wilson.de/FineFoodHall>

Client: Ueberseequartier Beteiligungs GmbH
Grosser Grasbrook 10
D-20457 Hamburg

**Yellow Moebl III, Muenster, Germany
(extension of furniture storage and offices)
completion 2009;**
<http://www.bolles-wilson.de/y3>

client: Rainer Scholze
Wienburgstrasse 173
D-48147 Muenster



Awards

Awards relevant to the project underlined

2009

Best Shopping Centre of the Year
Nederlandse Raad van Winkelcentra
(Dutch Council of Shopping Centers)
for Spuimarkt City Block, The Hague
Masterplan 1997, completion 2008

2007

Premio Urbanistica 2007 (Quality of public spaces),
Italian National Institute of Urban Planning
for Monteluca Masterplan, Perugia I, 2006 – 2012

Library of the Year 2007, German Library Association and
Ebelin and Gerd Bucerius ZEIT Foundation
for Prison Library, Münster D, 2004 – 2005

2004

German Urban Planning Award 2004 and
AIV Hamburg Building of the Year 2004 for Urban Planning
for Masterplan Falkenried, Hamburg D, 1999 – 2004

Award for Exemplary Corporate Architecture in NRW 2004
for RS + Yellow Furniture, Münster D, 2000 – 2003

2001

Mies van der Rohe Award 2001 (Nomination)
for New Luxor Theatre, Rotterdam NL, 1996 – 2001

1998

CARLSBERG prize 1998 (Nomination)

German Architecture Award 1996 (Commendation)
for WLW Office Building, Münster D, 1992 – 1995

1995

German Architecture Award 1995 (Commendation)
and Mies van der Rohe Award 1995 (Nomination)
for City Library, Münster D, 1987 – 1993

1993

German Architecture Award 1993 (Commendation)
for Kindergarten, Frankfurt Griesheim D, 1989 – 1992

1990

Gold Medal of the Japanese Architects Institute 1994
for Suzuki House, Tokyo J, 1990

Competition first prizes

Selection - completed projects underlined

2008

Urban Quarter Christiansberg, Copenhagen, Denmark
Development –2020

2006

Monteluca Masterplan, Perugia, Italy,
planning consent 2008

City Library, Helmond, The Netherlands
Completion scheduled for 2010

Fine Food Hall, Campanile + Pavilion 'Am Alten Hafenamt',
Überseequartier, HafenCity, Hamburg, Germany

2005

National Digital Library Korea, Seoul, South Korea
With Junglim Architects, Seoul

2003

Kaldewei Kompetenz Centre, Ahlen, Germany
Completion 2005

Bibliothèque Nationale, Luxemburg

2002

Royal College of Art – Sculpture School and Student Housing,
London, United Kingdom

2001

European Library for Information and Culture (BEIC),
With alterstudio partners and ahw Ingenieurgesellschaft mbH
Final Design completed 2008,

'Wohn+Stadtbau' Housing Association Headquarters,
Münster, Germany; Completion 2004

New Technical City Hall, Willich, Germany
Completion 2003

1999

Masterplan Falkenried, Hamburg, Germany
Completion 2004

1997

Nord LB Dom Quartier, Magdeburg, Germany
Completion 2002

Headquarters Borkener Volksbank, Borken, Germany
Completion 2000

1996

New Luxor Theater, Rotterdam, The Netherlands
Completion 2001

1995

Brink Centre, Hengelo, The Netherlands
Completion 1998

1994

Office Building ZKW/WVK Zumsandstrasse, Münster,
Germany; Completion 1999

DIEZE Erin Training Centre, Castrop-Rauxel, Germany
Completion 1996

1992

WLW Office Building Warendorfer Strasse, Münster, Germany
Completion 1995

1987

City Library, Münster, Germany
Completion 1993

Books / Monographs

2004

opere e progetti BOLLES+WILSON, Electa Milan

2003

Nieuwe Luxor Theater, Rotterdam, Axel Menges Stuttgart

NORD/LB, Magdeburg, Axel Menges Stuttgart

2001

El Croquis no. 105, Monograph

1999

Dialogue Magazine, Monograph

1996

Bolles+Wilson Projects 1994-1998, Birkhäuser Zürich

1995

A+U Special Issue 303, Bolles+Wilson

1994

El Croquis no. 67, Monograph

Shipsapes and BridgeBuildings, AA London

The Münster Library, Phaidon London

1993

Bolles+Wilson Projects, Westfälischer Kunstverein

1990

El Croquis no. 47, Monograph

1989

Western Objects - Eastern Fields, AA London

Contact Details

BOLLES+WILSON GmbH & Co. KG

Hafenweg 16
D-48155 Münster
Germany

T +49 (0)251/482 72-0
F +49 (0)251/482 72-24

www.bolles-wilson.com
info@bolles-wilson.com

Contact person:
Mr. Axel Kempers Dip. Ing. Architekt

Registration

Enrolment in the list of architects
Architect's Institute of North Rhine-Westphalia:

Prof. Dipl.-Ing. Julia B. Bolles-Wilson
November 2nd, 1988, No. A 21070

Peter L. Wilson Dipl. AA
February 22nd, 1989, No. A 21263

Consultant

mcgregor+partners landscape architecture | urban design
21c Whistler Street Manly Sydney Australia

mail PO Box 1083 Manly NSW 1655 Australia
T +61 (02) 9977 3853
F +61 (02) 9976 5501
www.mcgregorpartners.com.au



BOLLES+WILSON